

COMPOSITE VESSELS

PROVEN PERFORMANCE IN COMMERCIAL AND INDUSTRIAL APPLICATIONS



The non-corrosive, cost-effective solution for commercial/industrial water treatment and storage. Pentair® Composite Vessels offer fiberglass construction for outstanding performance and durability in harsh chemical environments. Available in capacities up to 900 gallons, composite vessels are available with a variety of different configurations.

FEATURES/BENEFITS

100% composite fiberglass construction
 Outstanding performance and durability
 Seamless design prevents from leakage
 Absolutely will not-and cannot-rust
 Factory-backed five-year warranty

OPERATING PARAMETERS

Maximum operating temperature-
 Thread inlet tank 49°C (120°F)
 Flange inlet tank 65°C (150°F)
 Maximum vacuum: 127mmHg (5"Hg)

MATERIAL OF CONSTRUCTION

Polyethylene Inner shell
 Opening in various options:
 4 in. threaded,
 6 in. flanged.

PENTAIR DESIGN PARAMETERS

Safety factor - 4:1
 Minimum burst at 600 psi
 Tested to 250,000 cycles without leakage

NSF/ANSI DESIGN PARAMETERS

Safety factor - 4:1
 Minimum burst at 600 psi
 Tested to 100,000 cycles without leakage

APPLICATIONS

Commercial/industrial softening
 Commercial/industrial filtration

COLOR OPTIONS

GR - Gray NA - Natural
 BL - Blue BK - Black



This pressure vessel has been tested and certified by WQA according to NSF/ANSI Std. 61 Section 8 and Std. 372 for lead free compliance.

SPECIFICATIONS FOR PE LINER TANKS

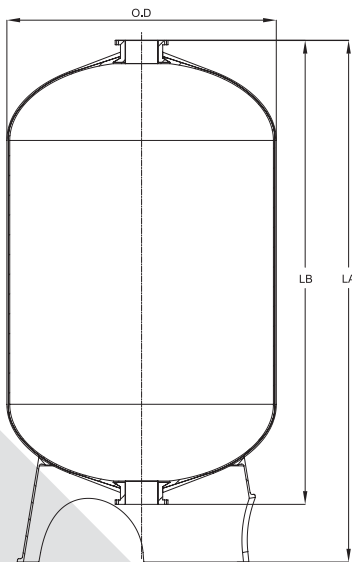
Tank Dia.	Tank Size		Opening		Total Height		Dia. mm	Capacity		Base
	in.	mm.	Top	Bottom	(LA) mm.	(LB) mm.		Gal.	Litre	
24 in.	24x72	610x1829	4"-8UN	\	1880	1743	613	119	450	SMC
	24x72	610x1829	4"-8UN	4"-8UN	2090	1764	625	119	450	TRIPOD
30 in.	30x72	762x1829	4"-8UN	\	2003	1775	764	187	708	SMC
	30x72	762x1829	4"-8UN	4"-8UN	2105	1772	764	187	708	TRIPOD
36 in.	36x72	914x1829	4"-8UN	\	2042	1776	914	264	999	SMC
	36x72	914x1829	4"-8UN	4"-8UN	2160	1791	914	264	999	TRIPOD
	36x72	914x1829	6" FLG	\	2090	1825	917	264	999	SMC
	36x72	914x1829	6" FLG	6" FLG	2210	1922	917	264	999	TRIPOD
42 in.	42x72	1067x1829	6" FLG	6" FLG	2289	1854	1073	345	1306	TRIPOD
48 in.	48x72	1219x1829	6" FLG	6" FLG	2335	1932	1226	463	1753	TRIPOD
63 in.	63x67	1600x1702	6" FLG	6" FLG	2068	1704	1626	600	2271	TRIPOD
	63x86	1600x2184	6" FLG	6" FLG	2513	2164	1626	900	3407	TRIPOD

*Measurements are subject to change without notice and are for reference only.

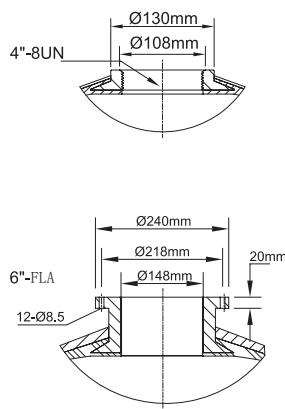
*Please refer the individual drawing for dimension, volumes and weight etc.

NOTE: Flexible connections must be installed between hard piping and tank opening. Failure to install flex connection properly with the vessel will void the warranty.

NOTE: An adequate vacuum breaker must be installed if negative pressure exceed 127mmHg (5" Hg) inside.



Detail opening



Detail base



SMC



TRIPOD



Pentair Water (SuZhu) Co.Ltd
 No.371, He Shan RD. Suzhou, Jiangsu Province, China TEL: 86-512-66617690 FAX: 86-512-66618853 <http://www.pentairaqua.com>
 Pentair Residential Filtration, LLC
 5730 North Glen Park Road, Milwaukee, WI 53209, USA TEL: 262.238.4400 FAX: 262.238.4404 Customer Care: 800.279.9404

All Pentair trademarks and logos are owned by Pentair, Inc. All other brand or product names are trademarks or registered marks of their respective owners. Because we are continuously improving our products and services, Pentair reserves the right to change specifications without prior notice. Pentair is an equal opportunity employer.
 0616 Rev B JUI15 © 2015 Pentair Residential Filtration, LLC. All Rights Reserved.